



We're providing simple and effective **social distancing signage and graphics for museums and heritage sites** to help protect visitors and employees from the spread of **COVID-19**

Hello

Thank you for taking the time to look through our social distancing graphics and signage brochure for museums and heritage sites.

Our team is working hard to make sure you are ready to open safely; enabling visitors and employees to adhere to social distancing guidelines.

This brochure shows a variety of options to get you started. **However, we can create any size and format of sign to meet your needs, messaging and brand.**

We hope to work with you soon. If you have any questions, please get in touch on 01252 336 000, email [enquiry@readesigns.com](mailto:enquiry@readesigns.com) or visit <https://www.readesigns.com/social-distancing-signage-graphics-for-museums/>

Many thanks,

The Reade Signs Team



\*All orders have a minimum charge of £100 exc VAT

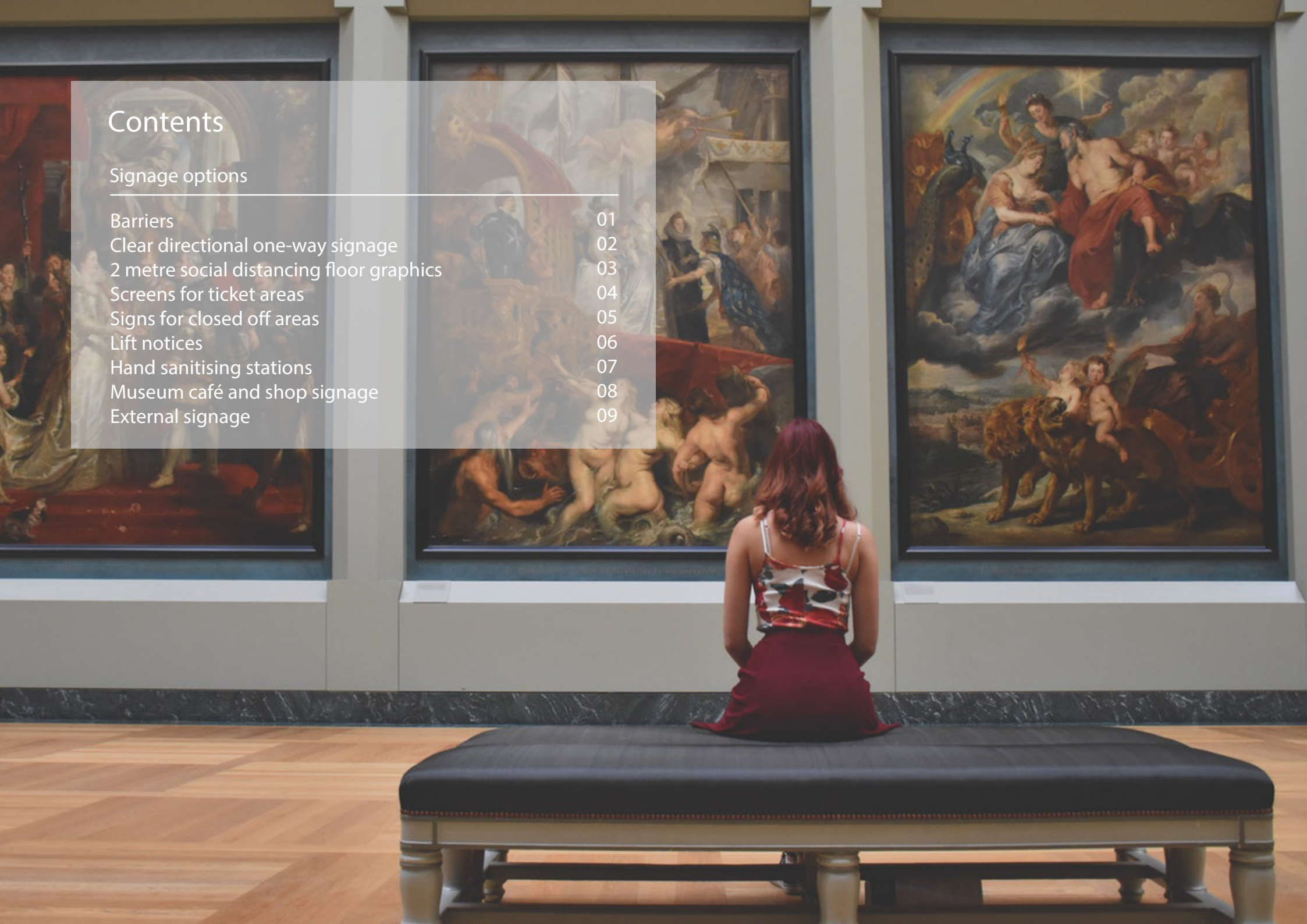
\*Artwork can be supplied and personalised subject to £50 exc VAT artwork charge

# Contents

## Signage options

---

Barriers	01
Clear directional one-way signage	02
2 metre social distancing floor graphics	03
Screens for ticket areas	04
Signs for closed off areas	05
Lift notices	06
Hand sanitising stations	07
Museum café and shop signage	08
External signage	09

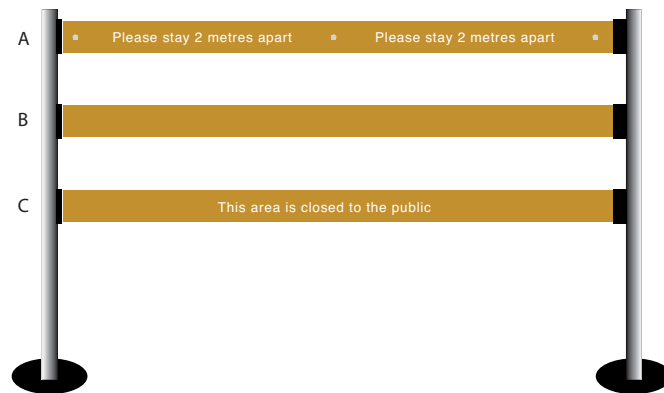
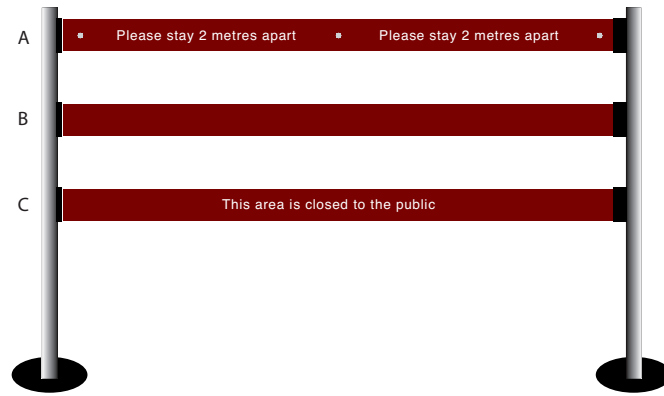


# Barriers

Retractable barriers for safe queuing, guiding and controlling visitors, or to block off closed areas.

**Size:** Span x 3400mm

**Cost:** £375 each



## Clear directional one-way signage

Internal or external floor signage to direct the flow of people throughout your building and grounds.

### External or internal application to smooth surfaces

**Size:** 500mm x 500mm

**Cost:** £14.50 each

### External application to non-smooth surface

**Size:** 500mm x 500mm

**Cost:** £15 each



## 2 metre social distancing floor graphics

Help visitors and employees maintain a 2 metre distance with hard-wearing floor graphics.

Distance can be changed should guidance change.

### External or internal application to smooth surfaces

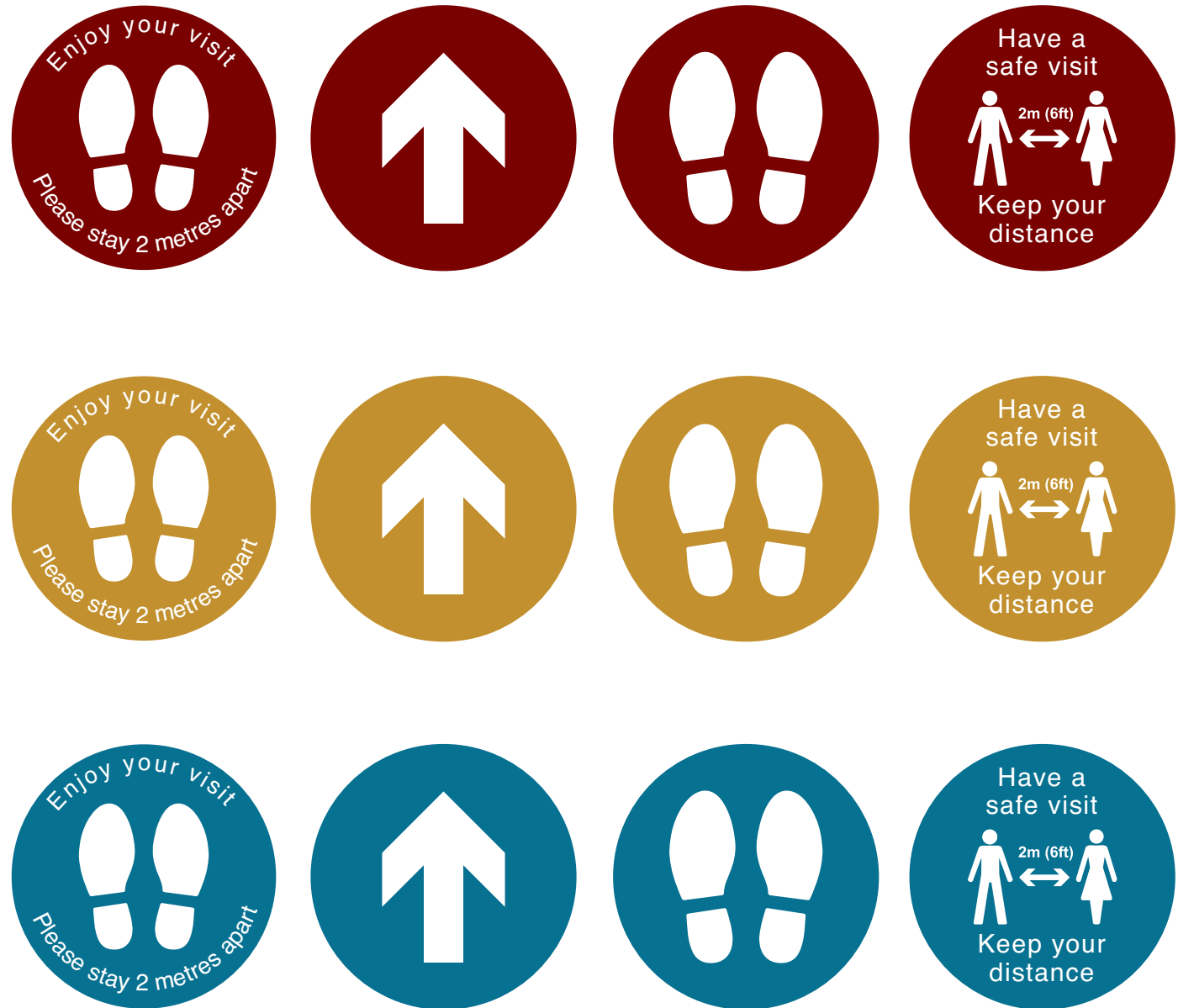
**Size:** 400mm dia

**Cost:** £10.75 each

### External application to non-smooth surface

**Size:** 400mm dia

**Cost:** £11.50 each



## Screens for ticket areas

Bespoke self-protection acrylic screens for you ticket area, information area or shop.

Made to order.



## Signs for closed off areas

There may be some areas of your site that need to remain closed. Our signs for these areas will support this.

**Printed acrylic sign with satin chrome fixings**

**Size:** 400mm x 400mm

**Cost:** £48 each





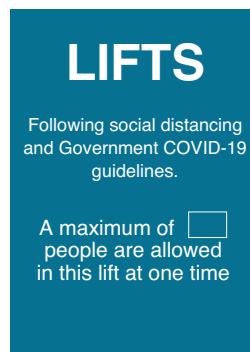
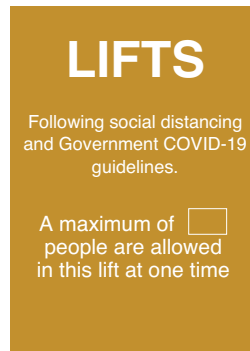
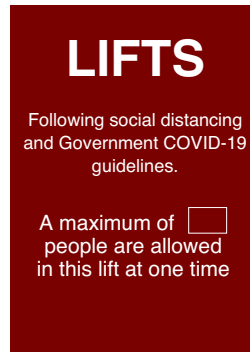
## Lift notices

Lifts are a contact hotspot. Clear lift signage will help minimise the number of people in a lift at any one time.

### Printed acrylic sign with satin chrome fixings

**Size:** 100mm x 150mm

**Cost:** £20 each



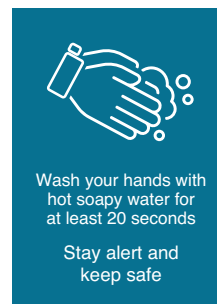
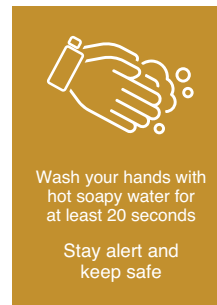
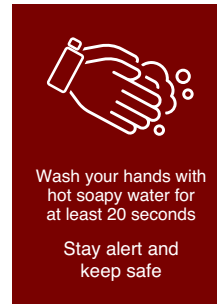
## Hand sanitising stations

Ensure visitors and employees adhere to hygiene and sanitation rules.

### Printed acrylic sign with satin chrome fixings

**Size:** 200mm x 300mm

**Cost:** £25 each



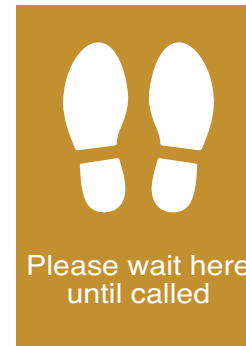
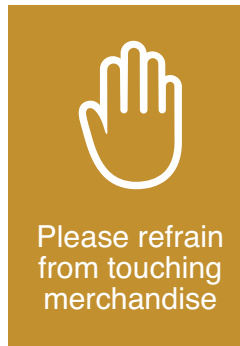
## Museum café and shop signage

Ensure a smooth flow of people in your café area or shop.

**Printed acrylic sign with satin chrome fixings**

**Size:** 210mm x 297mm

**Cost:** £26 each



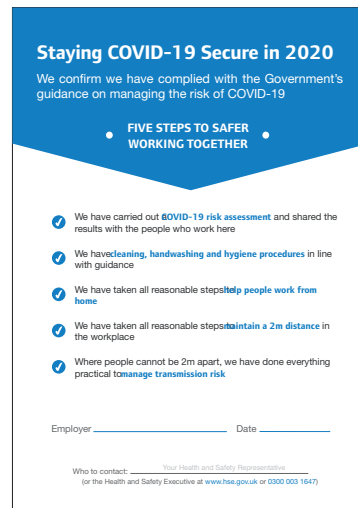
## External signage

Make sure everyone who enter your site knows they must adhere to COVID-19 health and safety guidelines.

### Printed acrylic sign with satin chrome fixings

**Size:** 400mm x 600mm

**Cost:** £52 each





This brochure shows a snapshot of the social distancing graphics and signage we can offer your museum or heritage site.

However, if you have specific creative, format, or size requirements, we can create bespoke graphics and signage to exactly meet your need.

Please don't hesitate to get in touch.

**t:** 01252 336 000

**e:** [enquiry@readesigns.com](mailto:enquiry@readesigns.com)